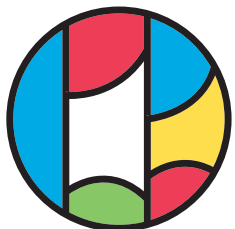


# Welcome to HIKI



## 比企アカデミー日本語学校

HIKI ACADEMY JAPANESE LANGUAGE SCHOOL **[ENG]**

# Hiki Academy provides a spacious and comfortable learning environment, where faculty and staff closely support students for their new life in Japan.

Hiki Academy's experienced teachers offer Japanese language classes in the Academy's spacious and comfortable classrooms. Hiki Academy has facilitated an environment where students can focus on their education without worries as its faculty and staff provide support to students in finding a residence, on their language studies, and their everyday life in Japan. In addition, the school also thoroughly advises students on applying for part-time jobs and their applications to university programs.

4月

• April Start, Entrance Ceremony

12月

• JLPT • Winter Vacation

5月

• Golden Week  
• Extracurricular Classes

1月

• January Start, Entrance Ceremony  
• Culture experience classes

6月

• Final Exams • EJU  
• Consultations on Furthering Education

2月

• Final Exams  
• Career survey

7月

• July Start, Entrance Ceremony  
• JLPT

3月

• Graduation • Spring Vacation

8月

• Summer Vacation

9月

• On-Campus school Fair • Final Exams • Fall Vacation  
• Explanatory meeting for higher grade education

10月

• October Start, Entrance Ceremony

11月

• EJU  
• Extracurricular Classes

## Event Schedule





# Message

At Hiki Academy Japanese Language School, all staff, including faculty and staff, will support students who are studying for their future dreams while living in an unfamiliar Japan.

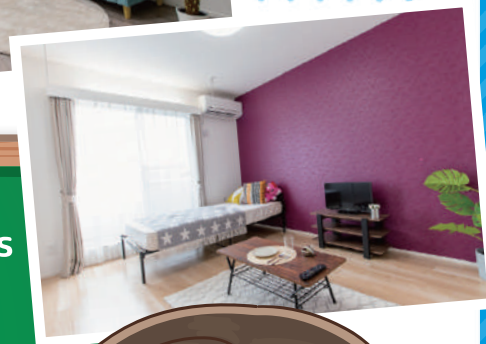
I went to a Japanese language school as well. Through the experience, I will carefully advise each student.

Moreover, the most important thing for us is the student's future. We will listen to their ambition and guide them in their career.



Hiki Academy  
Japanese Language School

Director **Hamit Takamasa**



# Features

- ✓ A diverse body of students from various countries
- ✓ Complete Support for Students intending to enroll in Japanese universities
- ✓ Complete Support for finding housing, everyday-life, and applying to Japanese
- ✓ Experienced teachers and Staff



## 生徒の声

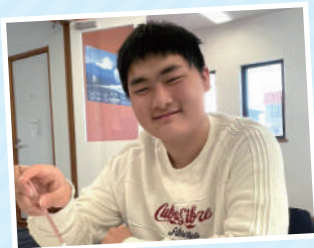
## STUDENT's VOICE

### マー ジンシャン

MA JINXUAN



China



I love games and Japanese idols, and I am learning Japanese through games and music. Thanks to this, I have improved my Japanese listening comprehension, but that is not enough to enter a university. So I'm practicing grammar and writing a lot under the kind teachers of Hiki Academy Japanese Language School. I like this school very much. I look forward to coming here every day. I am very happy to have friends from many countries other than China. At first, I couldn't get used to Japan because of the cultural differences, but recently I've been able to have conversations and now I like Japan. Next year, I will go to university, and I will do my best to understand the idols more.

### アーロン リュウ ジョシュア

SARSOZA AARON  
RYU JOSHUA LAMBINICIO



Philippines



I'm from the Philippines, 18 years old. I am very interested in the IT field, IT is a part of my life. After graduating from a Japanese language school, I would like to go to an IT-related vocational school and work for an IT company in the future. Filipinos can use English like their mother tongue, which helps me a lot in my life in Japan. But just speaking English is not enough when I make friends with Japanese and enjoy my daily life. So, my current goal is to master Japanese as soon as possible up to the level I can communicate with Japanese people fluently. I live with my family in Japan, so I don't have to worry about anything in my life. I will do my best to learn Japanese this year, and I would like to be able to use Japanese better next year.

### シャゼブ ムハンマド ウマル

SHAZAIB  
MUHAMMAD UMAR



Pakistan



I'm from Pakistan. There are not many Pakistani students in Japan, but at Hiki Academy Japanese Language School, we have two. I hope there will be more in the future. I am a Muslim, and the school even prepared a special prayer room for us, which I am very grateful for. The teachers also speak English, so they can help us in English when we don't understand. There are many Pakistanis who are in the car business in Higashimatsuyama, so I think it is the most suitable town for Pakistanis. There are also many curry shops, which are essential for us, so we don't have to worry about food. I'm not very good at Kanji, so my teachers are trying their best to teach me Kanji, and in the near future I want to be able to read Kanji easily like Japanese people.

### トン スウハン

DENG CHUHAN



China



I'm very glad to come to Japan. Japanese food is very delicious, and I have love sushi and Japanese sweets. I will work hard to learn Japanese and aim to pass the N1 exam. I also want to go to a famous university in Japan. If possible, I would like to enter the University of Tokyo. I will do my best to pass the exam. Now, my Japanese is not very good since I just came to Japan, but I like to travel alone, so I hope to learn daily conversation quickly and travel to various places. This is the start of my life in Japan.

### グエン フオン ホーアン イェン

NGUYEN PHUONG  
HOANG YEN



Vietnam



One year has passed since I came to Japan, and I have become used to Japanese life. I am currently aiming to enroll Rikkyo University, in an international communication department. I would like to study international culture or media, and use both English and Japanese.

### グエン ハイ ズン

NGUYEN HAI DUNG



Vietnam



I came from Hanoi, Vietnam. When I first came to Japan, I could hardly speak Japanese, so I couldn't understand what the teachers were talking about. I really had a lot of problems at first. Fortunately, the teachers at the school were very kind and even introduced me to part-time jobs. If I had any problems, they were always there to help me. Now that I am able to speak Japanese well, I rarely have any problems anymore. There are also Vietnamese food stores and restaurants near the school, so I don't feel inconvenienced. Also, I have many Vietnamese friends, so I feel like I am living the same life as in Vietnam. After graduating from the Japanese language school, I would like to study in Chuo Computer & Communication College, and my dream is to start a trading company between Vietnam and Japan in the future.

# Student's VOICE



# コース案内

## COURSE/TUITION

April  
Start

### 2-year Preparatory Course

B	BI
Int	Adv

July  
Start

### 1-year-and-9-months Prep. Course

B	BI
Int	Adv

Oct.  
Start

### 1-year-and-6-months Prep. Course

BI	Int
Adv	

Jan.  
Start

### 1-year-and-3-months Prep. Course

Int	Adv
-----	-----

#### Beginners

The objective of the beginner's course is for students to acquire basic sentence patterns and grammatical patterns and a basic competency in Japanese. The class is consisted of listening and conversation at beginner's level. Students will also learn basic Chinese characters and vocabulary in the course.

#### Beginner-Intermediate

At this level, students improve their listening ability and speaking ability, becoming able to understand and speak about various situations. Students will also be able to comprehend simple and clearly written sentences, while improve their skill of expression.

#### Intermediate

Students acquire a greater number of sentence patterns as well as complex grammar and expressions. Students are so engaged in thematic conversation practice. Students are taught strategies for the JLPT and EJU. At this level, there is a greater focus on reading comprehension, with students learning strategies to read short essays and increasing their knowledge of Chinese characters, Japanese vocabulary, and complex grammar. Students make a presentation and discussion about a newspaper and a magazine article.

#### Advanced

At this level, students prepare for entrance examinations for vocational school, university or graduate school. The target for students at this level is to pass the JLPT or N1 and achieve a score of at least 260 on the EJU. Students are taught academic Japanese in order to prepare them to function efficiently in universities when attending seminar, participating in debates, and writing their thesis.

## 学費

## TUITION

Course/Year		Application Fee	Entrance Fee	Tuition Fee	Textbooks and Course Materials	Subtotal	Total (Tax included)
2-Year Prep.	1st	¥ 20,000	¥ 50,000	¥ 540,000	¥ 80,000	¥ 690,000	¥ 759,000
	2nd			¥ 540,000	¥ 80,000	¥ 620,000	¥ 682,000
1-Year-and 9 months Prep.	1st	¥ 20,000	¥ 50,000	¥ 540,000	¥ 80,000	¥ 690,000	¥ 759,000
	2nd			¥ 405,000	¥ 60,000	¥ 465,000	¥ 511,500
1-and Half-Year Prep.	1st	¥ 20,000	¥ 50,000	¥ 540,000	¥ 80,000	¥ 690,000	¥ 759,000
	2nd			¥ 270,000	¥ 40,000	¥ 310,000	¥ 341,000
1-Year-and 3 months Prep.	1st	¥ 20,000	¥ 50,000	¥ 540,000	¥ 80,000	¥ 690,000	¥ 759,000
	2nd			¥135,000	¥ 20,000	¥155,000	¥ 170,500

#### Before Entrance

N1 acquisition ¥50,000

N2 acquisition ¥30,000

#### After Entrance

N1 acquisition ¥20,000

N2 acquisition ¥10,000

Perfect attendance ¥10,000

\*An airport pick-up service is available for ¥12,000 per person and dates will be arranged in consultation with the student. \*Textbooks and Course Materials Fees include textbooks fees, facility maintenance fees, extracurricular activities fees, health insurance fees, etc. \*Scholarship is exempted from academic fees.

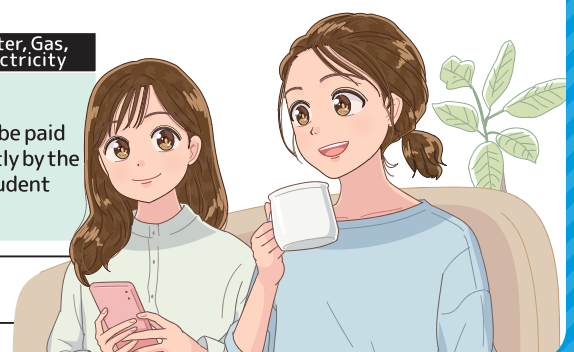
## 寮費

## DORMITORY FEE

Type	Rent	Move-In Fee	Facilities Fee (Futon included)	Total	Water, Gas, Electricity
S Class (Single)	¥ 60,000	¥ 60,000	¥ 40,000	¥ 280,000	Will be paid directly by the student
A Class (Single)	¥ 40,000	¥ 40,000	¥ 40,000	¥ 200,000	
B Class (Double)	¥25,000 P/P	¥30,000 P/P	¥40,000 P/P	¥145,000 P/P	

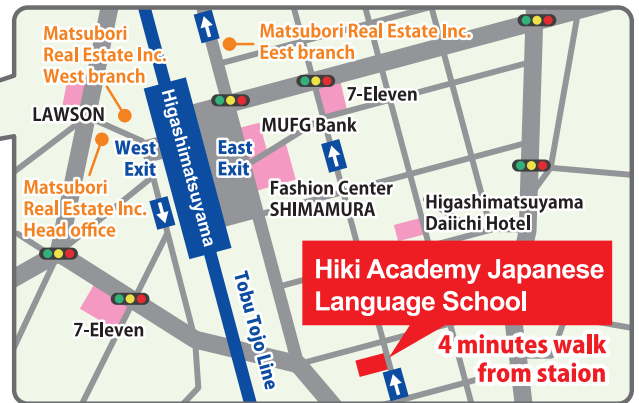
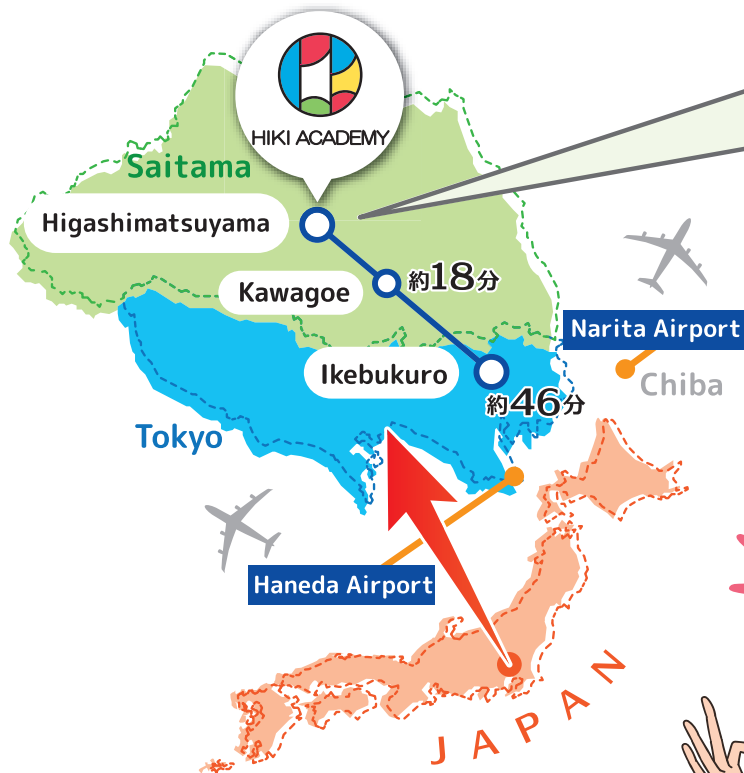
\*Facilities (readily available): An air conditioner, a refrigerator, a washing machine, microwave, rice cooker, and free Wi-Fi.\*The total sum is calculated based on a three-month rent payment.\*Availability will vary from time to time.

\*Rent include tax.



# アクセスマップ

ACCESS MAP



## 東松山市の紹介 ABOUT Higashi-matsuyama



Higashimatsuyama Station



Yakyu Inari Shrine



Large shopping mall



City Hall Street



Dormitory



Part-time job



\*It doesn't include waiting time and transfer time in the required time. It might vary slightly depending on the time zone travel time.



比企アカデミー日本語学校

HIKI ACADEMY JAPANESE LANGUAGE SCHOOL

2-2-2 Shinmei-cho,  
Higashimatsuyama-shi,  
Saitama, Japan 355-0021

TEL.0493-81-4131 FAX.0493-81-4132

Email:hiki-school@matsubori.co.jp



<https://www.hiki-academy.com/>

Switching to Specified Skilled Worker is also available. Please feel free to contact us for details.